



SOUZ VACUUM

INFO

Souz Vacuum has been experts in Manufacturing and Exporting vacuum pump for almost 40 years. We are a Designated Production Enterprise of Ministry of Machine-Building industry and Member of China vacuum society.

We are the preferred choice for Rotary vane vacuum pumps, Liquid ring vacuum pumps/compressors, Roots vacuum pump and vacuum systems. Proudly, we provide vacuum solutions for a broad range of industries including Chemical, Power, Paper, Mining, Food, Oil-gas treatment and laboratory application. All our products are available with a variety of options design features to match a diverse range of applications, so our customers benefit from the most appropriate and cost-effective solutions. Our manufacturing sites use the latest manufacturing techniques, machinery and equipment. Our quality management procedures surpass CE, ISO9001 requirements and offer all necessary certification such as MINE PRODUCT SAFETY MARK CERTIFICATE to meet the specific requirement of all our customers.

Souz Vacuum Mission:

We aim to be a loyal and qualified provider of vacuum pumps.

We listening and caring of the customer represent a real business mission and reach the highest level in unique solutions.

We offer reliable products and outstanding customer service to customers.

We meet customers' demand with qualified and fast commercial network.

We offer customers customized solutions, maximizing the "performance/price ration"

Souz pledge:

Supreme Quality, Outstanding Prestige, Unique Technique, Zealous Service.

Contact us:

Website: www.souzvac.com

Email: sales@souzvac.com

Tel/Fax: 0086-576-86832015

Add: 118# Xinlu RD, Taiping Town, Wenling, Zhejiang, China



**Let's
SAVE
THE WORLD**

-SV Single Stage Oil Sealed Rotary Vane Vacuum Pump-



SV-008



SV-020N



SV-040



SV-200



SV-630

SV single stage rotary vane vacuum pumps combining with many years of experience in vacuum engineering and the latest international vacuum technology developed to meet requirements of both the industry and the environment. They are being used in all areas of vacuum engineering. They are equally suited for both industrial production and research applications. They may be used to generate a rough and medium vacuum or as backing pumps in pump combinations with Roots pumps or high vacuum pumps. The comprehensive range (pumping capacity ranging from 8 to 750 m³ / h) allows every customer to select the right pump for his particular needs.

Benefits:

- **Reliable:** robust construction, reliable operation, proven performance.
- **Environmental:** clean exhaust, no pollution. Equipped with check valve and oil anti suck-back device.
- **Easy Servicing:** easy service routine, compact design, easy maintenance.
- **High performance:** continues working in free of trouble. Low Noise. Ultimate pressure is verified.
- **Cooling methods:** Air cooling
- **Working condition:** clean, dry and non-explosive environment.
- **Low Operating costs:** optimum cost-benefit ratio.
- **Gas Ballast Valve:** it can be pumping a certain vapor when equipped gas ballast valve.
- **Driven by standard motors.** Special types available on request.

Applications:

- **Food processing--**vacuum packaging, air drying sterilized, degassing ,grape presses for wine production.
- **Automotive and tire--**material handling of components, vacuum forming and vacuum lifting.
- **Vacuum forming--**from small plastic items to complicated plastic/resin components to complete objects.
- **Power engineering--**oil transformer production, electrical elements.
- **Hospital/Clinic--** CVS medical vacuum units.

Specification:

Model	Pump capacity (m ³ /h)		Ultimate vacuum (Pa)	Motor Power (KW)		Inlet Diam (inch)	Rotary speed (rpm)		Oil Capacity (L)	G.W (kg)	Noise dB (A)	Dimensions (mm)
	50 HZ	60 HZ		50 HZ	60 HZ		50 HZ	60 HZ				
SV008	8	9	150	0.55		G3/8	2800	3360	0.25	11	70	330*165*152
SV010	10	12	150	0.55		G1/2	2800	3360	0.3	22	70	310*210*205
SV016	16	19	150	0.90		G1/2	2800	3360	0.3	22	70	310*210*205
SV020	20	24	150	0.90		G1/2	2800	3360	0.5	25	70	405*230*210
SV020N	20	24	150	0.70	1.0	G1/2	2800	3200	0.4	25	68	340*263*228
SV-025	25	30	150	0.75		G1/2	2800	3360	0.5	20	64	475*253*210
SV-040	40	48	50	1.5		G1 1/4	1440	1728	1.0	48	67	660*300*270
SV-063	63	75	50	2.2		G1 1/4	1440	1728	2.0	81	68	695*420*295
SV-100	100	120	50	3.0		G1 1/4	1440	1728	2.0	85	72	735*420*295
SV-160	160	192	50	4.0	5.5	G2	1440	1728	4.5	152	74	805*520*410
SV-200	200	240	50	5.5	5.5	G2	1440	1728	4.5	159	76	825*520*410
SV-250	250	300	50	5.5	7.5	G2	1440	1728	7.0	230	76	1000*550*410
SV-300	300	360	50	7.5	7.5	G2	1440	1728	7.0	236	76	1200*550*410
SV-630	630	750	10	15	18.5	DN100	960	1150	35	660	75	1500*900*754
SV750	750	/	10	18.5	/	DN100	1150	/	35	715	77	1500*900*754

-2XZ/2XZF Dual Stage Oil Sealed Rotary Vane Vacuum Pump-



2XZ-4C



2XZ-8C



2XZF-6C

2XZ-C Series Direct-Drive Rotary Vane Vacuum Pump are improved on the type of 2XZ. We adopt foreign advanced technology and experiences.

It is used for pumping the the water vapor in sealed vessels to make the vessels in a vacuum. It can also be as fore-pump of the high vacuum or super high vacuum equipment.

2XZF Series--- Ex grade: IIA,IIB. For pumping the flammable and explosive gases of T1-T4 temperature group.

Application: It is widely used in vacuum smelting, vacuum coating, solar noncrystalline silicon, monocrystal silicon, polysilicon, distilling, industry, food packaging, aerospace technology, semiconductor,electronics, refrigeration equipment, medical treatment, chemicals and laboratory or laboratory of universities and colleges.

Specification:

Specification/Model		2XZ-2C	2XZ-4C	2XZ-6C	2XZ-8C	2XZ-15C	2XZ-25C
		2XZF-2C	2XZF-4C	2XZF-6C	2XZF-8C	2XZF-15C	2XZF-25C
Pump capacity (M ³ /h)	50(HZ)	7.2(2L/S)	14.4(4L/S)	21.6 (6L/S)	28.8 (8L/S)	54 (15L/S)	90 (25L/S)
	60(HZ)	8.6(2.4L/S)	17.2(4.8L/S)	26 (7.2L/S)	34.5 (9.6L/S)	64.8 (18L/S)	108 (30L/S)
Ultimate pressure (Pa)	Partial	$\leq 6 \times 10^{-2}$	$\leq 6 \times 10^{-2}$	$\leq 6 \times 10^{-2}$	$\leq 6 \times 10^{-2}$	$\leq 6 \times 10^{-2}$	$\leq 6 \times 10^{-2}$
	Total	≤ 1.33	≤ 1.33	≤ 1	≤ 1	≤ 1	≤ 1
Rotary speed (rpm)	50(HZ)	1400	1400	1400	1400	1400	1400
	60(HZ)	1720	1720	1720	1720	1720	1720
Motor power(kw)		0.37	0.55	0.75	1.1	1.5	3
Voltage(V)		220/380	220/380	380	380	380	380
		380					
Inlet diameter (mm)		KF-25	KF-25	KF -40	KF -40	KF -40	KF - 50
Noise (dBA)		65	66	68	70	70	72
Oil capacity(L)		1	1.2	2	3	4	5
Overall size (mm)		514*168*282	565*168*282	565*200*342	650*240*430	700*240*430	770*240*430
		514*168*282	610*260*340	580*260*340	660*260*340	720*260*430	770*260*430
Weight(Kg)		20/20	24/62	40/70	60/83	75/94	85/125

-2X Dual Stage Oil Sealed Rotary Vane Vacuum Pump-



2X-8A



2X-15A



2X-70A

The 2X series vacuum pump is of two-stage structure, its operation performance consists of two parts, high-pressure stage and low pressure stage. The technical parameter of the pump is 6×10^{-2} Pa. According to the user's operation requirements, this pump is used as a backing pump.

Features:

- Wide range of free-air capacities to match specific applications.
- Positive pressure oil system ensures proper lubrication and prevents oil starvation under high gas loads.
- Fast acting inlet valve protects internal components against oil and air contamination if the pump stops while under vacuum.
- Gas ballast valve limits internal condensation; Lets you use pump when condensate vapors are present.

Application:

- This series of pumps are elementary equipment for pumping air from sealed chamber.
- It can be used alone, also can be used as the fore-pump, process pump or titanium pump of booster pump, roots vacuum pump, gas circulation cooling roots pump, oil diffusion pump, and molecular pump.
- vacuum coating, vacuum heat treatment, vacuum smelting, vacuum tube, bulb, chemicals, packing, forming, health and medical appliances, laboratory, vacuum drying machines and vacuum filtering.

Specification:

Specification/Model		2X-4A	2X-8A	2X-15A	2X-30A	2X-70A
Pumping speed(L/s)		4	8	15	30	70
Pumping speed(m ³ /h)		14	29	54	108	252
Ultimate pressure (Pa)	Partial pressure	$6 \times 10^{-2} (5 \times 10^{-4} \text{ Torr})$				
	Total pressure	$2.66 (2 \times 10^{-2} \text{ Torr})$				
Rotary speed(r/min)		450	320	320	450	420
Motor power(Kw)		0.55	1.1	2.2	3	5.5
Working voltage(V)		380	380	380	380	380
Cooling Mode		Natural cooling			Water cooling	
Inlet Diam(mm)	I.D.	25	40	50	65	80
	O.D.	30	50	80	85	100
Dimensions(mm)	Length	540	790	790	810	910
	Width	335	430	530	480	650
	Height	380	540	540	560	700
Oil capacity(L)		1.0	2.0	2.8	3.0	4.2
Recommend solenoid valve		DDC-JQ25	DDC-JQ40	DDC-JQ50	DDC-JQ65	DDC-JQ80
Noise (dB A)		65	70	70	70	75
Weight(kg)		60	158	202	230	480

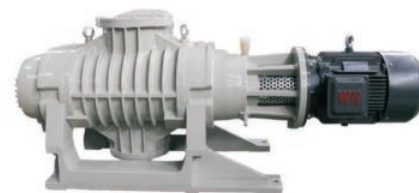
-Roots Vacuum Pump-



ZJP150



ZJ600



ZJP1200

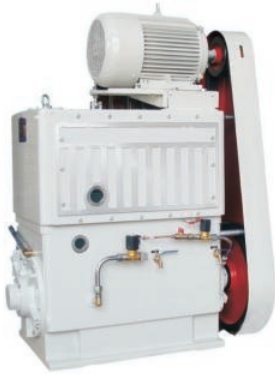
Roots pump have ZJ series and ZJP series. It is a kind of roots vacuum pump in which a couple of lobed rotors turn like 8-shape in high speed synchronously. Two rotors rotate and produce aspiration and exhaust which principle is just like a roots blower. But it can not discharge the gas to atmosphere directly and requires to be used with a fore vacuum pump in series connection.

Application: It is widely used in vacuum moulding, vacuum smelting, vacuum gas pumping, vacuum coating industry, vacuum distilling and vacuum drying of chemical and pharmaceutical industry etc. The pump is insensitive to a little dust.

Specification:

Model	Ultimate pressure		Pumping capacity L/S	Max. allowable pressure Pa	Inlet diam. mm	Outlet diam. mm	Power KW	Recommend backing pump	Weight without motor KG
	Pa	Torr							
ZJP-70	5×10^{-2}	3.7×10^{-4}	70	4×10^3	80	80	1.1	2H-15	110
ZJP-150	5×10^{-2}	3.7×10^{-4}	150	4×10^3	100	100	2.2	2H-15,2H-30	205
ZJP-300	5×10^{-2}	3.7×10^{-4}	300	4×10^3	150	150	4	2H-30,2H-70	265
ZJP-600	5×10^{-2}	3.7×10^{-4}	600	2.7×10^3	200	200	7.5	2H-70	780
ZJP-1200	5×10^{-2}	3.7×10^{-4}	1200	2.7×10^3	250	200	11	H-150	880
ZJP-2500	5×10^{-2}	3.7×10^{-4}	2500	2.7×10^3	320	320	22	ZJ-600/H150	1350
ZJ-150	5×10^{-2}	3.7×10^{-4}	150	1×10^4	100	100	2.2	2H-15,2H-150	195
ZJ-300	5×10^{-2}	3.7×10^{-4}	300	7×10^3	150	150	4	2H-30	250
	1×10^{-1}	8×10^{-4}	300	7×10^3	150	150	4	H-70	250
ZJ-600	5×10^{-2}	3.7×10^{-4}	600	5×10^3	200	200	7.5	2H-70	760
	1×10^{-1}	8×10^{-4}	600	5×10^3	200	200	7.5	H-150	760
ZJ-1200	5×10^{-2}	3.7×10^{-4}	1200	5×10^3	250	200	11	ZJ-300/2X(H)-70	860
	1×10^{-1}	8×10^{-4}	1200	5×10^3	250	200	11	H-150	860

-Rotary Piston Vacuum Pump-



2H-120



H-150



H-150GF

Rotary piston vacuum pump is a sort of vacuum production equipment suitable for pumping ordinary gases and a little condensed gases (water vapor) with a gas ballast used. The pump must be fitted with appropriate accessories if gas is rich in oxygen, explosive, corrosive to ferrous metal, chemical reactive with vacuum pump oil. The pump can be operated singly.

H-150GF is an updated product with subsidiary oil tank according to the Artificial stone industry and smelting industry, flush the dust of inlet port to subsidiary oil tank to make the oil clean to increase pump working life. It also can be as a backing pump when combined with another high vacuum pump, such as diffusion pump, oil booster vacuum pump and roots vacuum pump. Rotary piston vacuum pump can be used for a longer time than the rotary vane vacuum pump.

Specification:

Model	Ultimate Pressure		Pumping Speed (L/s)	Inlet Diam. (mm)	Outlet Diam. (mm)	Motor Power (KW)	Cooling Water Consumption (kg/h)	Weight (kg)
	Pa	Torr						
H-70G	1	7.5×10^{-3}	70	80	50	5.5	150	525
H-150G	1	7.5×10^{-3}	150	100	80	7.5	200	850
H-150	1	7.5×10^{-3}	150	100	80	15	200	720
H-150GF	1	7.5×10^{-3}	150	100	100	11	200	850
H-180	1	7.5×10^{-3}	180	160	100	15	450	1155
H-200	1	7.5×10^{-3}	200	160	100	15	450	1155
H-230	1	7.5×10^{-3}	230	160	100	18.5	450	1155
H-300	1	7.5×10^{-3}	300	160	100	22	700	1525
2H-30	6×10^{-2}	4.5×10^{-4}	30	63	50	4	100	380
2H-50	6×10^{-2}	4.5×10^{-4}	50	76	56	5.5	100	375
2H-70	6×10^{-2}	4.5×10^{-4}	70	80	76	7.5	150	710
2H-120	6×10^{-2}	4.5×10^{-4}	120	100	80	11	200	960
2H-150	6×10^{-2}	4.5×10^{-4}	150	100	80	15	300	1020

-Oil Diffusion Vacuum Pump-



K



KTN



KT

KT, K series oil diffusion pump is the main pump used to obtain high vacuum ($2 \sim 10 \times 10^{-5}$ pa). It can be combined with water-cooled plate, valves and mechanical vacuum pump together to becoming high vacuum system, the ultimate pressure can be up to ($2 \sim 10 \times 10^{-4}$ pa). The characteristic of the pump is strong pumping ability, Large pumping capacity from 480 to 60000 l/s are suitable.

Application:

It is widely used in vacuum coating, vacuum furnace, electronics, chemical industry, metallurgy and other high-tech fields, and it has also been widely used in titanium sponge field with high praise.

Specification:

Item	K-250	K-300	K-320	K-400	K-500	K-600	K-630	K-800	K-1000	K-1200	
	KT-250	KT-300	KT-320	KT-400	KT-500	KT-600	KT-630	KT-800	KT-1000	KT-1200	
Ultimate pressure (Pa)	5×10^{-5}										
Pumping Capacity (L/S)	3100	4000	4600	7500	11000	16000	18000	26000	40000	55000	
	3500	4600	5000	8500	12000	17500	20000	30000	50000	60000	
Critical forepump pressure (Pa)	40										
Backflow rate mg/(cm ² min)	$\leq 3 \times 10^{-2}$										
Heating time(min)	≤ 40			≤ 45		≤ 50	≤ 60	≤ 65	≤ 80		
Heating Power(KW)	2.2-2.4	2.4-3	4~5	4~5	6~8	8~9	9~11	13-13.5	17-20	28-30	
Voltage(V)	220			380							
Pump Oil Model	KS-3										
Pump Oil Volume (L)	1-1.4	1-1.6	1.4-1.8	3~4	4	6~7	7~8	12~14	15-16	22	
Cooling water consumption(L/s)	350	400	420	500	600	800	850	1200	1500	2600	
Inlet dimension (mm)	250	300	320	400	500	600	630	800	1000	1200	
Outlet dimension(mm)	65	80	80	100	100	150	160	200	300	300	
Recommended forepump speed(L/s)	8	15	15	30	70	70	70	150	300	300	
Dimension (mm)	L(Length)	473	695	725	885	1010	1145	1170	1520	1990	2235
	B(Width)	450	505	525	665	815	975	1010	1275	1290	1750
	H(Height)	650	726	830	925	1165	1444	1275	1870	2220	2465
Net weight(kg)	41	76	85	150	165	345	390	620	940	1450	

-2BEA Single Stage Liquid Ring Vacuum Pump-



BARE PUMP



BELT DRIVE



DIRECT DRIVE

The liquid ring vacuum pumps and compressors of 2BE series are high-efficient and energy-saving products developed by our company on the basis of our scientific achievements and production experiences over the years combining with the advanced international technique of similar products. They are usually used to suction the gas without solid particle, undissolved and noncorrosive gas in order to form vacuum and pressure in the closed container. By changing the structure material, they can also be used to suction corrosive gas or use corrosive liquid as operating liquid.

Application:

- Paper-making, light industry, chemical and pharmacy, electronic appliance, coal-cleaning, mineral concentration, fertilizer,
- Tail gas/flare-gas recycle :recycle of VCM in PVC device, polyester production .liquid chlorine production
- Vacuum crystallization ,purification and filtration, distillation of crude oil.
- Vacuum metallurgy.
- Compression of inflammable and explosive gases like ethyne and hydrogen .compression of toxic and corrosive gases like chlorine

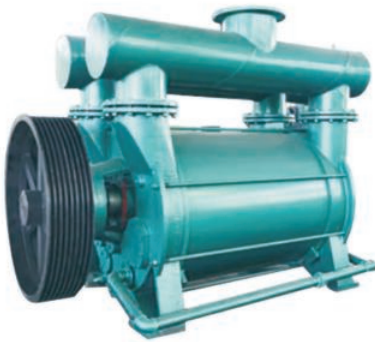
Specification:

Model	Min.inlet pressure hpa	Pump rotary speed RPM	Motor power KW	Pumping capacity m ³ /min				Pump weight without motor KG
				Abs.pressure 60hPa	Abs.pressure 100hPa	Abs.pressure 200hPa	Abs.pressure 400hPa	
				Saturated air	Saturated air	Saturated air	Saturated air	
2BEA 103	33	1300	11	3.95	4.58	4.87	4.93	125
		1450	11	4.52	5.13	5.53	5.50	
		1625	15	5.47	5.97	6.33	6.23	
		1750	15	6.10	6.50	6.83	6.70	
2BEA 152	33	1300	11	4.95	5.69	4.46	6.52	175
		1450	15	5.51	6.38	7.22	7.31	
		1750	18.5	7.04	7.87	8.72	8.79	
2BEA 153	33	1100	15	5.67	6.77	7.33	7.33	190
		1300	18.5	7.58	8.35	8.93	8.80	
		1450	18.5	8.95	9.52	10.0	9.82	
		1620	22	10.2	10.6	11.0	10.8	
2BEA 202	33	790	18.5	7.69	9.32	10.4	10.2	370
		880	18.5	8.84	10.6	11.5	11.3	
		980	22	10.0	11.4	12.6	12.6	
		1170	30	12.1	14.2	14.9	14.8	
2BEA 203	33	790	30	11.6	13.5	14.5	14.6	450
		880	30	13.5	15.4	16.6	16.4	
		980	37	16.4	17.7	18.7	18.4	
		1100	45	19.0	19.7	20.9	20.4	
2BEA 204	33	790	30	14.6	16.3	16.6	16.6	450
		880	37	16.4	17.9	18.3	18.3	
		980	37	18.6	19.8	20.5	20.5	
		1170	55	21.4	22.8	24.1	24.2	

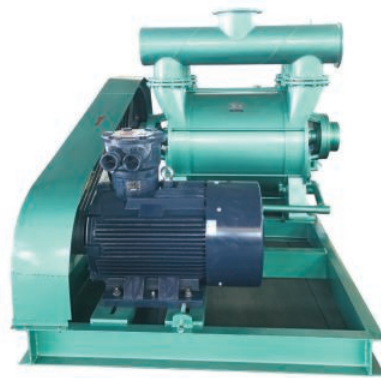
Specification:

Model	Min.inlet pressure hpa	Pump rotary speed RPM	Motor power KW	Pumping capacity m ³ /min				Pump weight without motor KG
				Abs.pressure 60hPa	Abs.pressure 100hPa	Abs.pressure 200hPa	Abs.pressure 400hPa	
				Saturated air	Saturated air	Saturated air	Saturated air	
2BEA 252	33	565	30	14.3	17.3	19.4	18.6	850
		660	37	18.1	21.0	23.1	22.6	
		740	45	20.4	23.0	25.0	25.3	
		820	55	23.0	25.8	28.5	27.9	
		880	55	25.1	28.3	31.0	30.1	
2BEA 253	33	565	45	20.0	28.6	28.1	28.8	950
		590	45	21.8	24.8	29.0	30.1	
		660	55	28.4	31.3	34.6	35.1	
		740	75	34.3	36.8	39.6	39.6	
		820	75	39.3	41.5	44.1	43.7	
		880	90	42.6	44.7	47.2	46.7	
2BEA 303	33	472	55	34.0	38.5	42.5	41.8	1650
		520	75	38.5	41.5	44.3	43.5	
		530	75	42.8	45.0	47.3	46.6	
		590	90	49.9	51.6	53.5	51.3	
		660	110	57.5	59.0	60.0	58.0	
		740	132	60.0	62.7	63.5	62.8	
2BEA 353	33	372	75	37.4	46.4	53.5	54.9	2000
		420	90	50.6	54.9	58.6	58.4	
		464	110	61.5	63.9	66.5	65	
		490	110	65.6	67.6	68.7	67.7	
		500	132	65.8	68.2	70.9	69	
		530	132	69.9	72.8	74.7	73	
		590	160	80	82.8	84	81	
2BEA 355	160	372	90	57	59.2	61.4	62.1	2200
		420	110	69.6	70.3	71.2	71.5	
		472	110	76.7	78.3	79.1	79.8	
		500	132	80	82	83.1	84.2	
		530	132	83.2	85.5	88	88.3	
		590	160	88.6	91.8	95	96	
2BEA 403	33	330	132	63.3	72.5	80.4	80	3300
		372	160	81	85.5	89.6	87.6	
		420	185	95	98.5	102	99	
		472	200	110	115	116.8	120	
		530	250	120	125	127.6	126	
2BEA 405	160	330	132	88.6	9	93.4	94.2	3400
		372	160	103	104.5	106.5	106.8	
		420	185	114.	116.3	118.7	118.7	
		472	220	121.8	125.8	130	130.8	
		530	280	131.1	135	141	143.7	

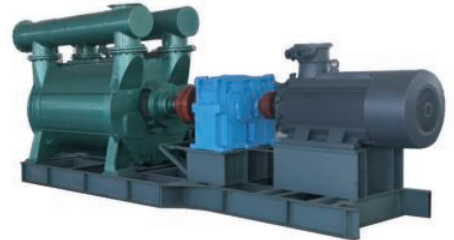
-2BEC Single Stage Liquid Ring Vacuum Pump-



BARE PUMP



BELT DRIVE



GEARBOX DRIVE

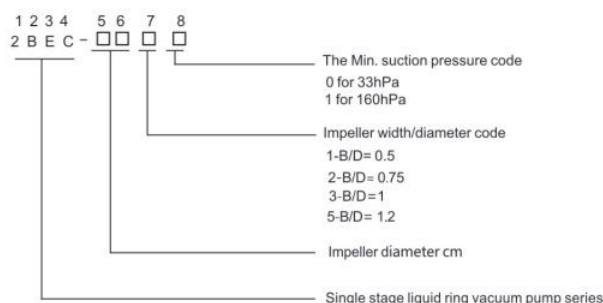
The 2BEC liquid ring vacuum pumps and compressors are high-efficient and energy-saving products developed by our company on the basis of our scientific achievements and production experiences over the years and internationally advanced technique of similar products.

containers. They are also applicable for corrosive gases, or corrosive liquid can be used as treatment fluid by modifying materials of parts. The products are being widely used in fields of paper making, chemistry, pharmacy, coal dressing, mineral separation, petro-chemistry, light industry, food, metallurgy, building material, stoneware and chemical fertilizer due to their outstanding and reliable performances and durability.

Compared with 2BEA series, 2BEC series are different in the following aspects:

- (1) they have higher suction capacity and lower vacuum, thus they are suitable for operations requiring large suction capacity such as mine gas discharge and pressure swing adsorption for chemical plants.
- (2) Cylindrical ball bearings are replaced by double-row tapered roller bearings, thus service lives of the bearings are prolonged and load carrying capacities are improved.
- (3) The 'concave-convex connector' for locating the pump and distribution plate is replaced by 'two pins on one surface'. The stop pins ensure the radial clearance between the impeller and pump.
- (4) Air inlets and vents are arranged on both top and side end of the pump cover. In case that the gas shall be filled or discharged from the top, the side air inlets and vents are sealed by blank caps, thus there are more assembly options.
- (5) High voltage motor may be available for the 2BEC series since their energy consumptions and powers are increased due to large volumes and large suction capacities. The transmission is usually carried out by reducers. Pumps 50/52 may use belt transmission while pump 60 and superior ones shall adopt reducers for transmission.
- (6) 2BEC series have additional eccentric clapboards for dividing the pumps into two chambers with impeller middle plates. Air inlets and vents on side flanges make one pump adequate for operations requiring two pressure points, such as paper making.

Liquid ring vacuum pump: mode expression method



Specification:

Model	Min. abs. pressure hPa	Pump rotary speed RPM	Max. Capacity M ³ /min	Motor power Kw	Driving mode	Diameter mm		Pump weight without motor Kg	Overall size
						Inlet	Outlet		
2BEC40	160(-0.0853 Mpa)	300	72	75	V-belt	300	300	2930	2102*1320 *1160
		340	81	90					
		390	95	110					
		440	105	132					
		490	115	160					
		530	125	185					
		570	135	200					
2BEC42	160(-0.0853 Mpa)	610	144	220	V-belt	300	300	3360	2391*1320 *1160
		300	96	90					
		340	111	132					
		390	128	160					
		440	143	185					
		490	157	220					
		530	169	250					
2BEC50	160(-0.0853 Mpa)	570	180	280	V-belt	350	350	5440	2603*1580 *1450
		610	193	315					
		230	127	132					
		260	147	160					
		300	170	200					
		340	198	220					
		380	212	280					
2BEC52	160(-0.0853 Mpa)	420	230	315	Gear	350	350	6000	2853*1580 *1450
		470	258	450					
		230	157	160					
		260	180	200					
		300	207	250					
		340	233	280					
		380	257	315					
2BEC60	160(-0.0853 Mpa)	420	280	400	Gear	400	400	8200	2837*1830 *1720
		470	313	500					
		200	183	185					
		230	213	250					
		260	245	280					
		290	268	315					
		320	294	355					
2BEC62	160(-0.0853 Mpa)	350	318	400	Gear	400	400	9100	3132*1830 *1720
		400	362	550					
		200	224	220					
		230	262	280					
		260	296	355					
		290	328	400					
		320	358	450					
2BEC67	160(-0.0853 Mpa)	350	388	500	Gear	500	500	11390	3389*1960 *1855
		400	425	700					
		180	255	280					
		210	307	355					
		240	348	400					
		270	388	450					
		300	427	500					
2BEC72	160(-0.0853 Mpa)	320	452	630	Gear	500	500	14150	3587*2140 *1985
		330	466	630					
		370	522	710					
		170	288	355					
		190	369	400					
		210	408	450					
		240	458	500					
2BEC80	160(-0.0853 Mpa)	270	508	630	Gear	600	600	18500	4066*2370 *2260
		300	567	710					
		340	633	900					
		210	540	560					
		225	580	630					
		240	620	710					
		255	660	800					
2BEC90	160(-0.0853 Mpa)	270	700	900	Gear	600	600	21000	4297*2490 *2380
		290	750	1000					
		164	590	560					
		170	615	630					
		185	680	710					
		195	735	800					
		210	795	900					
2BEC100	160(-0.0853 Mpa)	230	850	1000	Gear	700	700	31000	4796*3040 *2830
		245	900	1120					
		155	800	800					
		165	855	900					
		175	905	1000					
		190	990	1120					
		200	1030	1250					

-2SK/2YK Dual Stage Liquid/Oil Ring Vacuum Pump-



2SK



2SK/2YK



2SK in SS304

2SK/2YK Liquid Ring Vacuum Pump

Model 2SK Liquid Ring Vacuum Pump is used for pumping air and other gas that is non-corrosive, unsolvable in water and with no solid powder, so that vacuum and pressure can be obtained in the sealed container. However, a little liquid is allowed mixing with the pumped gas.

2YK oil ring vacuum pump with higher vacuum pressure. Choose right working medium, 2YK model can pump all industrial gases.

Typical Applications: Spinning, Food and Metallurgy industry, Chemistry industry and other industries for vacuum evaporation, vacuum concentrating, vacuum resurgence, vacuum drying and vacuum smelting.

Specification:

Model	Ultimate Pressure		Pumping Speed	Rotary Speed	Cooling Water Consumption	Inlet Diam	Outlet Diam	Motor Power	Weight	Replace model
	hpa	torr	M3/min	r/min	L/min	mm	mm	kw	(Kg)	
2SK-2	33	25	2	1450	25	40	40	5.5	215	2BV 5110
2YK-2	6.6	5	2	1450	25	40	50	5.5	215	
2SK-3	44	30	3	1450	30	50	50	7.5	335	2BV 5111
2YK-3	6.6	5	3	1450	30	50	80	7.5	335	
2SK-6	33	25	6	1450	35	50	50	11	385	2BV 5131
2YK-6	6.6	5	6	1450	35	50	80	11	385	
2SK-12	33	25	12	980	60	80	80	22	850	2BE 202
2YK-12	6.6	5	12	980	60	80	100	22	850	
2SK-25	33	25	25	980	70-100	100	100	45	1330	2BE252-660
2YK-25	6.6	5	25	980	70-100	100	120	45	1330	
2SK-30	33	25	30	980	70-100	100	100	55	1440	2BE253-660
2YK-30	6.6	5	30	980	70-100	100	120	55	1440	

-2BV Monoblock Liquid Ring Vacuum Pump-



2BV2



2BV5



2BV6 in SS304

Introduction :

2BV series water ring vacuum pump is suitable for pumping gas and vapor. Its suction pressure can reach 33mbar (absolute pressure) (97% vacuum degree). When the transformer oil is used as working liquid (it is called oil ring vacuum pump), the suction pressure can reach 6.7mbar (absolute pressure) (99.3% vacuum degree), so it can fully replace reciprocating vacuum pump. As the compressor, the ultimate pressure is 0.26MPa (absolute pressure).

2BV2-Ex, 2BV6 series water ring vacuum pump/ compressor are mainly used for pumping the explosive gas or work in the various inflammable and explosive environments, and their performance parameter are the same as 2BV2, 2BV5 series.

Main features :

- The direct-coupled design is easy installation and can save space.
- The bearings are all the Japanese NSK.
- The standard configuration uses the John Crane mechanical seal which can eliminate leakage and easy to maintain.
- The pump has the cavitation protection port to protect the pump
- All motors are all adopted Y2 series products. The protective grade is IP54 or IP55 (common is IP44), the insulation grades is F (common is B).

Specification:

Curve No.	Model	Suction amount		Ultimate vacuum mbar (Mpa)	Anti-explosion grade	Motor power KW	Pump speed r.p.m	Liquid flow-rate L/min	Noise dB(A)	Weight kg
		m ³ /min	m ³ /h							
60V	2BV2 060	0.45	27	33mbar (-0.098M Pa)	/	0.81	2840	2	62	37
61V	2BV2 061	0.86	52			1.45	2840	2	65	41
70V	2BV2 070	1.33	80			2.35	2860	2.5	66	66
71V	2BV2 071	1.83	110			3.85	2880	4.2	72	85
110V	2BV5 110	2.75	165			4	1440	6.7	63	120
111V	2BV5 111	3.83	230			5.5	1440	8.3	68	150
121V	2BV5 121	4.66	280			7.5	1440	10	69	210
131V	2BV5 131	6.66	400			11	1460	15	73	280
161V	2BV5 161	8.33	500			15	970	20	74	390
60V	2BV2 060-Ex	0.45	27	33mbar (-0.098M Pa)	dIIBT4	1.1	2840	2	62	37
61V	2BV2 061-Ex	0.86	52			1.5	2840	2	65	41
70V	2BV2 070-Ex	1.33	80			3	2860	2.5	66	66
71V	2BV2 071-Ex	1.83	110			4	2880	4.2	72	85
110V	2BV6 110	2.75	165			4	1440	6.7	63	148
111V	2BV6 111	3.83	230			5.5	1440	8.3	68	196
121V	2BV6 121	4.66	280			7.5	1440	10	69	220
131V	2BV6 131	6.66	400			11	1460	15	73	314
161V	2BV6 161	8.33	500			15	970	20	74	426

-Air Cooled Dry Screw Pump-



STANDARD



WITH ABB MOTOR



WITH FILTER

Dry compound screw vacuum pump is ideal for any application where oil contamination is unacceptable and for corrosive field. Dry screw vacuum pump widely used in the fields of medical instruments, analysis instruments, biological products and pharmaceutical preparation, food and medicine packaging, gasoline vapor recycle, film preparation, high science engineering and chemical analysis, semiconductor, micro-electronics, solar energy, deal with materials industrial and R&D labs etc.

Features:

- Advanced technology, adopting advanced the fifth generation of compound variable pitch screw technology.
- Environmental friendly; environment protection, no-oil (oil free), no-water, non-pollution, clean vacuum.
- The gases pumped can be recycled, applying for oil and gas recovery and solvent recycling and special gas recycling.
- Energy-saving, energy-saving technology with variable pitch, reduce energy consumption by 30%.
- Chemical corrosion resistance, having anti-corrosion film PTPE.
- Air-cooled structure, easy to operate.
- High ultimate vacuum up to 3Pa.
- Operating pressures from atmospheric pressure to ultimate pressure.
- Saving manpower, longer maintenance intervals of up to ten thousand hours.
- Easy to clean, if the pump under the dirt can be filled with the gas or cleaning agent to cleaning.
- Reliable sealing structure, use of a lip seal, mechanical seal and a gas seal structure, exhaust smooth, with good fluid-handling capabilities.
- Light weight, using new lightweight materials.
- Low voice and vibration, using high precision parts.
- Low temperature rise, due to the use the new material, and heat faster.
- Shockproof prevent design can be placed on the ground directly.
- Disassembling break, easy to maintain.
- Easy to install, adopting KF connection.

Specification:

Model	SZS020	SZS050	SZS080
Pumping capacity(m ³ /h)	20	50	80
Ultimate pressure(Pa)	3(50)		
Motor power(KW)	1.1 /1.5(for harsh environment)	1.5/ 2.0(for harsh environment)	2.2/3.0(for harsh environment)
Rotary speed(rpm)	2900		
Inlet/outlet diam.	KF25/KF25	KF40/KF25	KF40/KF25
Cooling method	Air cooled		
Gear Oil	Mobil 1		
Sealing method	Double lip Teflon/double lip rubber/Mechanical seal		
Noise (dB)	69	70	71
Weight (Kg)	36	53	62

-SBS Box Type Screw System-



SBS box-type screw vacuum system is a new type system special for semi-conductor industry which designed according to customer's requirement. It consists of screw pump, variable voltage inverter, vacuum gauge, cooling fan, metal frame, metal plate and other relative components.

Specification:

Model	SBS020	SBSV020	SBS050	SBS080
Pump model	SZS020	SZS020	SZS050	SZS080
Pumping capacity m ³ /h	20	20	50	80
Ultimate pressure Pa	3	3	3	3
Power KW	1.1	1.1	1.5 /2.2	2.2 /3
Installation type	Horizontal	Vertical	Horizontal	Horizontal
Inlet/outlet diameter mm	KF25/KF25	KF25/KF25	KF40/KF25	KF40/KF25
Cooling type	Air cooled			
Noise dB(A)	65	65	67	68
Weight KG	48	54	68	77

Features:

- Low noise, can be used in office and other noise strict requirement environment.
- Attractive appearance, color can be painted in white or Grey.
- Variable speed meet to customer's different requirements--different pumping capacity,different vacuum.
- Vacuum pressure can be tested real -time and showing digit.
- Variable voltage inverter have electric protective feature to protect vacuum pump,showing trouble status.
- Air cooled, good heat dissipation,stable vacuum pressure.
- Adopts metal frame, light and strong
- Stainless steel handle, easy to move.

-Dry Scroll Vacuum Pump-



GWSP75



GWSP150



GWSP600

Never use it to pump toxic, explosive, flammable, corrosive gases, chemicals, solvents or powders.

Features & Benefits

- Wide product lineup
- Suitable for any type of power supply around the world
- No oil back-diffusion No oil back-diffusion exhaust
- Repeatedly operated between atmospheric and vacuum
- Low vibration, low noise and high efficiency
- Easy of maintenance

Applications

- Freeze drying/gel drying
- Distillation/purification/filtration
- Lithium ion battery process ,Hydrogen fuel cell process
- Coating, PVD/CVD/PLD
- Vacuum oven
- Leak detection
- Surface analysis instruments
- Oil vapor recovering

Specification:

Model			GWSP 75	GWSP 150	GWSP 300	GWSP 600
Capacity	50Hz	m ³ /h	3.6	7.2	15.5	31.3
		cfm	2.2	4.3	9.3	18.7
	60Hz	m ³ /h	4.3	8.6	18.3	37.4
		cfm	2.5	5.1	10.9	22.3
Ultimate Pressure		mbar	≤8.0×10 ⁻²	≤6.0×10 ⁻²	≤2.6×10 ⁻²	≤1.0×10 ⁻²
		Torr	≤6.0×10 ⁻²	≤4.0×10 ⁻²	≤1.9×10 ⁻²	≤7.5×10 ⁻³
		psi	≤1.2×10 ⁻³	≤9.0×10 ⁻⁴	≤3.8×10 ⁻⁴	≤1.4×10 ⁻⁴
Noise Level		dB(A)	≤52	≤57	≤60	≤61
Leakage		mbar.l/s	1x10 ⁻⁷			
Max. Inlet/Exhaust Pressure		MPa	0.1 / 0.13			
Ambient Operation Temp.		°F	41 ~ 104			
Cooling Type			Air cooled			
Inlet/Exhaust Flange			KF25/16	KF25/16	KF25/16	KF40/16
Motor 1 phase	Motor Power	KW	0.25	0.25	0.55	0.75
	Voltage	VAC	50 ~ 60Hz/110~115 or 200~230			
	Speed	rpm	50Hz /1425; 60Hz /1725			
	Connector		North America, Europe, UK/Ireland, India			
Motor 3 phase	Motor Power	KW	0.37	0.37	0.55	0.75
	Voltage	VAC	50 Hz/200~230 or 380~415; 60 Hz/200~230 or 460			
	Speed	rpm	50Hz /1425; 60Hz /1725			
Dimensions	1 phase	mm	405×225×260	465×265×305	495×305×355	500×320×360
	3 phase	mm	445×265×305	430×265×305	495×305×355	505×320×360
Net Weight	1 phase	kg	15	18	27	31
	3 phase	kg	16	20	31	38
Others			With air flush			

-CVS Medical Vacuum System-



CVS series vacuum system adopt SV single-stage rotary vane vacuum pump as host machine, and it is equipment integration equipped with a vacuum tank, vacuum gauge, automatic control system etc.

The system features:

- To adopt environmentally high-performance vacuum pump, no oil injection
- Manual and automatic can be control to option, the vacuum can be set to adjust
- Two options of vacuum tank: vertical or horizontal
- Simple operation and strong vacuum, can meet every kinds of inquire from different customers.
- Easy moving, space small.
- CVS integration is a preferred central vacuum system for enterprise

Specification:

Model	Pumping capacity (m ³ /h)		Vacuum pump	Amount	Pressure Mpa	Each Pump Power (KW)		Vacuum tank(m ³)	Voltage
	50HZ	60HZ				50HZ	60HZ		
CVS-1X020	20	24	SV-020	1	0~0.1	0.90	0.90	0.06-0.2	380V/220V
CVS-1X040	40	48	SV-040	1	0~0.1	1.5	1.5	0.06-0.2	380V
CVS-1X063	63	75	SV-063	1	0~0.1	2.2	2.2	0.06-0.2	380V
CVS-1X100	100	120	SV-100	1	0~0.1	3.0	3.0	0.06-0.2	380V
CVS-1X160	160	192	SV-160	1	0~0.1	4.0	5.5	0.3-2	380V
CVS-1X200	200	240	SV-200	1	0~0.1	5.5	5.5	0.3-2	380V
CVS-1X250	250	300	SV-250	1	0~0.1	5.5	7.5	0.3-2	380V
CVS-1X300	300	360	SV-300	1	0~0.1	7.5	7.5/9.0	0.3-2	380V
CVS-2X020	40	48	SV-020	2	0~0.1	0.90	0.90	0.06-0.3	380V/220V
CVS-2X040	80	96	SV-040	2	0~0.1	1.5	1.5	0.06-1	380V
CVS-2X063	126	150	SV-063	2	0~0.1	2.2	2.2	0.3-2	380V
CVS-2X100	200	240	SV-100	2	0~0.1	3.0	3.0	0.3-2	380V
CVS-2X160	320	384	SV-160	2	0~0.1	4.0	5.5	0.5-2	380V
CVS-2X200	400	480	SV-200	2	0~0.1	5.5	5.5	0.5-2	380V
CVS-2X250	500	600	SV-250	2	0~0.1	5.5	7.5	0.5-2	380V
CVS-2X300	600	720	SV-300	2	0~0.1	7.5	7.5/9.0	0.5-2	380V
CVS-3X100	300	360	SV-100	3	0~0.1	3.0	3.0	0.5-2	380V
CVS-3X160	480	576	SV-160	3	0~0.1	4.0	5.5	0.5-2	380V
CVS-3X200	600	720	SV-200	3	0~0.1	5.5	5.5	0.5-2	380V
CVS-3X250	750	900	SV-250	3	0~0.1	5.5	7.5	0.5-2	380V
CVS-3X300	900	1080	SV-300	3	0~0.1	7.5	7.5/9.0	0.5-2	380V

-Roots-Piston Pump Vacuum System-



JZP2H type Roots-Rotary piston vacuum system consists of the main pump i.e. ZJP type Roots vacuum pump and backing pump i.e. rotary piston vacuum pump.

It has not only the generally vacuum feature, also has some advantages as follows, saving energy, high ultimate vacuum with high pumping speed and creditable quality. It can pump not only the common gas but also the gas that contains no solid and corrosion.

This vacuum system used widely in chemical, electronic, pharmaceutical, vacuum coating industry. It is the best choice in the vacuum industry.

Specification:

Model	Pump Model			Pump Speed L/S	Ultimate Pressure		Motor Power (KW)		
	Main Pump	Backing Pump			Pa	Torr	Main Pump	Backing Pump	
		I	II					I	II
JZP2H150-5	ZJP150	2H30		150	2×10^{-2}	1.5×10^{-4}	2.2	4	
JZP2H150-8	ZJP150	2H15		150	2×10^{-2}	1.5×10^{-4}	2.2	2.2	
JZP2H300-4	ZJP300	2H70		300	2×10^{-2}	1.5×10^{-4}	4	7.5	
JZP2H300-8	ZJP300	2H30		300	2×10^{-2}	1.5×10^{-4}	4	4	
JZPH300-4	ZJP300	H70		300	1×10^{-1}	7.5×10^{-4}	4	7.5	
JZPH600-4	ZJP600	H150		600	1×10^{-1}	7.5×10^{-4}	7.5	15	
JZPH600-8	ZJP600	H70		600	1×10^{-1}	7.5×10^{-4}	7.5	7.5	
JZP2H600-8	ZJP600	2H70		600	2×10^{-2}	1.5×10^{-4}	7.5	7.5	
JZPH1200-8	ZJP1200	H150		1200	1×10^{-1}	7.5×10^{-4}	11	15	
JZP2H300-42	ZJP300	ZJP70	2H30	300	1×10^{-2}	7.5×10^{-5}	4	1.1	4
JZP2H300-44	ZJP300	ZJP70	2H15	300	1×10^{-2}	7.5×10^{-5}	4	1.1	2.2
JZPH600-42	ZJP600	ZJP150	H70	600	2×10^{-2}	1.5×10^{-4}	7.5	2.2	7.5
JZP2H600-42	ZJP600	ZJP150	2H70	600	1×10^{-2}	7.5×10^{-5}	7.5	2.2	7.5
JZP2H600-44	ZJP600	ZJP150	2H30	600	1×10^{-2}	7.5×10^{-5}	7.5	2.2	4
JZP1200-42	ZJP1200	ZJP300	H150	1200	2×10^{-2}	1.5×10^{-4}	7.5	4	15
JZPH150-42	ZJP1200	ZJP300	H150	1200	2×10^{-2}	1.5×10^{-4}	11	4	11
JZPH1200-44	ZJP1200	ZJP300	H70B	1200	2×10^{-2}	1.5×10^{-4}	11	4	7.5
JZP2H1200-44	ZJP1200	ZJP300	2H70	1200	1×10^{-2}	7.5×10^{-5}	11	4	7.5
JZPH2500-44	ZJP2500	ZJP600	H150	2500	2×10^{-2}	1.5×10^{-4}	22	7.5	15

-Roots-Liquid Ring Pump Vacuum System-



JZPS type Roots-Liquid ring vacuum system consists of the main pump i.e. Roots vacuum pump (ZJ /ZJP model) and backing pump i.e. Liquid ring vacuum pump--"2SK-6" / Corrosion Resistance Liquid Ring Vacuum System--"F2SK-6".

It can pump not only the common gas but also the gas that contains vapor and a little dust.

Compared with the common mechanical vacuum pump and liquid ring vacuum pump, it has some advantages:

It can endure the oil, vapor and tiny dust. Its ultimate vacuum is high and its pumping speed in higher vacuum is great. So it is a kind of ideal vacuum-obtaining equipment for drying, dehydrating and gas-expelling in the trade of light-spinning, grocery and chemical industry etc.

Specification:

Model	Pump model		Pumping capacity L/S	Max. Inlet pressure Pa	Pa (absolute pressure)		Total power KW
	Main pump	Backing pump			Liquid ring unit	Oil ring unit	
JZJ2S70-1	ZJ(P)70	(F)2SK-3	70	10000	267	80	9
JZJ2S150-2	ZJ(P)150	(F)2SK-3	150	6000			10.5
JZJ2S150-1	ZJ(P)150	(F)2SK-6	150	10000			18
JZJ2S300-2	ZJ(P)300	(F)2SK-6	300	4000			19
JZJ2S300-1	ZJ(P)300	(F)2SK-12	300	8000			26
JZJ2S600-2A	ZJ(P)600	(F)2SK-12	600	4000			27.5
JZJ2S600-2B	ZJ(P)600	(F)2SK-20	600	7000			42.5
JZJ2S70-2.1	ZJ(P)70	ZJ(P)30,(F)2SK-1.5	70	6000	25	0.8	6.25
JZJ2S150-2.1	ZJ(P)150	ZJ(P)70,(F)2SK-3	150	6000			12
JZJ2S300-2.1	ZJ(P)300	ZJ(P)150,(F)2SK-6	300	5000			22
JZJ2S600-2.1	ZJ(P)600	ZJ(P)300,(F)2SK-12	600	4000			31.5
JZJ2S150-4.1	ZJ(P)150	ZJ(P)30,(F)2SK-1.5	150	3000			7.75
JZJ2S300-4.1	ZJ(P)300	ZJ(P)70,(F)2SK-3	300	2000			13
JZJ2S600-4.1	ZJ(P)600	ZJ(P)150,(F)2SK-6	600	1500			23.5
JZJ2S1200-4.1	ZJ(P)1200	ZJ(P)300,(F)2SK-12	1200	1000	25	0.8	37
JZJ2S300-4.2.1	ZJ(P)300	ZJ(P)70,ZJ(P)30,(F)2SK-1.5	300	1200	0.5	0.05	10.25
JZJ2S600-4.2.1	ZJ(P)600	ZJ(P)150,ZJ(P)70,(F)2SK-3	600	1200			17.5
JZJ2S1200-4.2.1	ZJ(P)1200	ZJ(P)300,ZJ(P)150,(F)2SK-6	1200	1000			33
JZJ2S2500-4.2.1	ZJ2500	ZJ(P)600,ZJ(P)300,(F)2SK-12	2500	1000			53.5

-Roots-Diffusion Pump Vacuum System-



JKT,JK series diffusion pump units is a main vacuum equipment to gain high vacuum(10^{-2} — 10^{-4} Pa).Its a high vacuum system which complete with Oil diffusion (as main pump),vacuum valves,water-cooling baffle,bellows, mechanical pump(as backing pump).

Main feature: Pumping speed (750L/s-30000L/s) is available for different customers to choose; It can continuous working.

Application: Electron, chemistry,metallurgy,aviation,material, biomedical, atomic energy, universe detection etc.high-tech area. i.e. vacuum furnace,vacuum coating equipment and vacuum freeze drying equipment.

The common Diffusion pump units is controlled by pneumatic vacuum valve.

Specification:

Model	Pumping Capacity L/S	Main pump model	Cold trap	Pneumatic Baffle valve	Backing pump			Valves of pipeline		
					Roots pump	Mechanical pump	Holding pump	Pneumatic baffle valve	Solenoid valve	Gas valve
JKT/JK160	900/750	KT/K-160	SDB-160	GDQ-S160		2X-8		GDQ-J50/2	DDCY-40Q	GQC-1.5
JKT/JK200	1400/1250	KT/K-200	SDB-200	GDQ-S200		2X-15		GDQ-J65/2	DDCY-40Q	GQC-1.5
JKT/JK250	1750/1650	KT/K-250	SDB-250	GDQ-S250		2X-15		GDQ-J65/2	DDCY-40Q	GQC-1.5
JKT/JK300	2300/2000	KT/K-300	SDB-300	GDQ-S300	ZJP-30	2X-15		GDQ-J80/2	DDCY-50Q	GQC-5
JKT/JK320	2500/2300	KT/K-320	SDB-320	GDQ-S320	ZJP-30	2X-15		GDQ-J80/2	DDCY-50Q	GQC-5
JKT/JK400	4250/3250	KT/K-400	SDB-400	GDQ-S400	ZJP-150	2X-30	2X-4	GDQ-J100/2	DDCY-25/65Q	GQC-5
JKT/JK500	6000/5000	KT/K-500	SDB-500	GDQ-S500	ZJP-150	2X-70	2X-8	GDQ-J100/2	DDCY-40/80Q	GQC-5
JKT/JK600	8750/8000	KT/K-600	SDB-600	GDQ-S600	ZJP-300	2X-70	2X-15	GDQ-J150/2	DDCY-50/80Q	GQC-5
JKT/JK630	10000/9000	KT/K-630	SDB-630	GDQ-S630	ZJP-600	2X-70	2X-15	GDQ-J160/2	DDCY-50/80Q	GQC-5
JKT/JK800	15000/13000	KT/K-800	SDB-800	GDQ-S800	ZJP-600	2X-70/2	2X-30	GDQ-J200/2	DDCY-65Q/ 2*80Q	GQC-10
JKT/JK900	20000/15000	KT/K-900	SDB-900	GDQ-S900	ZJP-1200	2X-70/2	2X-30	GDQ-J200/2	DDCY-65Q/ 2*80Q	GQC-10
JKT/JK1000	25000/20000	KT/K-1000	SDB-1000	GDQ-S1000	ZJP-1200	H-150/2	2X-30	GDQ-J250/2	DDCY-65Q/ 2*100Q	GQC-10
JKT/JK1200	30000/27500	KT/K-1200	SDB-1200	GDQ-S1200	ZJP-1200	H-150/2	2X-70	GDQ-J300/2	DDCY-80Q/ 2*100Q	GQC-10

-Roots-Vane Pump Vacuum System-



JZPX is using Vacuum roots pump as main pump, Rotary vacuum pump as backing pump. It has simple operation and compact structure. It can pump the air and other gas not including condensate and corrosive gas.

This equipment has the features such as compact structure, easy to operate, good capacity of extracting and short time extracting.

Used widely in any vacuum system which needs high vacuum and wide range for pump speed. Such as vacuum smelting, vacuum coating, power capacity and transformer equipment.

Filter or condensers must be equipped for some processes with more water and dusts.

In addition, two-stage water-ring pump can be used for rough pumping so a large quantity of water and dusts are extracted by water-ring pump. And then the normal life of the unit can be extended.

Type expression :

JZPX 300--4

J:unit

ZP:the main pump is Roots vacuum pump

X:the backing pump is rotary vane pump

300:the pumping speed of the main pump (L/S)

4:the pumping speed ratio of the pump

Specification:

Model	Pump model			Pumping capacity (L/S)	Ultimate pressure		Inlet diam.(mm)	Motor power(kw)		
	Main pump	Backing pump			Pa	Torr		Main pump	Backing pump	
		I	II						I	II
JZPX70-4	ZJP70	2x15	-	70	2×10^{-2}	1.5×10^{-4}	80	1.1	2.2	-
JZPX150-5	ZJP150	2x30A	-	150	2×10^{-2}	1.5×10^{-4}	100	2.2	3	-
JZPX300-4	ZJP300	2x70A	-	300	2×10^{-2}	1.5×10^{-4}	150	4	5.5	-
JZPX300-7	ZJP300	2x30A	-	300	2×10^{-2}	1.5×10^{-4}	150	4	3	-
JZPX600-8	ZJP-600	2x70A	-	600	2×10^{-2}	1.5×10^{-4}	200	7.5	5.5	-
JZPX150-42	ZJP1500	ZJP30	2x15	150	1×10^{-2}	7.5×10^{-5}	100	2.2	0.75	2.2
JZPX300-42	ZJP300	ZJP70	2x30A	300	1×10^{-2}	7.5×10^{-5}	150	4	1.1	3
JZPX300-44	ZJP300	ZJP70	2x15	300	1×10^{-2}	7.5×10^{-5}	150	4	1.1	2.2
JZPX600-42	ZJP600	ZJP150	2x70A	600	1×10^{-2}	7.5×10^{-5}	200	7.5	2.2	5.5
JZPX600-45	ZJPP600	ZJP150	2x30A	600	1×10^{-2}	7.5×10^{-5}	200	7.5	2.2	3
JZPX1200-44	ZJP1200	ZJP300	2x70A	1200	1×10^{-2}	7.5×10^{-5}	250	11	4	5.5

NOTE: The above models are recommended by national standards, Vacuum units also can be designed in different shapes according to users' special requirements

WORKSHOP





Tel/Fax:0086-576-86832015

Email:sales@souzvac.com

Website:www.souzvac.com